

SPECIFICATIONS

AMPLIFIER SECTION

Power Output:	100 Watts per channel, min RMS, at 8 ohms, both channels driven from 20 Hz to 20 kHz, with no more than 0.08% THD.
Dynamic power output:	2 · 170 Watts at 2 ohms 2 · 135 Watts at 4 ohms 2 · 140 Watts at 8 ohms
Total Harmonic Distortion:	0.08% at rated power 0.08% at 1 watt output
IM Distortion:	0.08% at rated power 0.08% at 1 watt output
Damping Factor:	60 at 8 ohms
Input Sensitivity and Impedance	
PHONO:	2.5 mV, 50 kohms
Line (CD, TAPE-1, 2, VIDEO, DVD):	150 mV, 50 kohms
Video (VIDEO, DVD)	1 Vp-p, 75 ohms
Output Level and Impedance	
Line (TAPE-1, 2, VIDEO):	150 mV, 2.2 kohms
Video (VIDEO, MONITOR):	1 Vp-p, 75 ohms
Zone 2:	150 mV, 22 kohms
Phono Overload:	120 mV RMS. at 1 kHz, 0.5% T.H.D.
Frequency Response:	20 Hz to 30 kHz : ± 1 dB
RIAA Deviation:	20 Hz to 20 kHz : ± 0.8 dB
Tone Control	
Bass:	± 10 dB at 100 Hz
Treble:	± 10 dB at 10,000 Hz
Signal-to-Noise Ratio	
Phono:	80 dB (IHF A, 5 mV input)
CD/Tape:	100 dB (IHF A)
Muting:	-50dB

TUNER SECTION

FM

Tuning Range:	87.5 to 108.0 MHz (100 kHz steps)
Usable Sensitivity	
Mono:	11.2 dBf, 1.0 μ V (75 ohms IHF) 0.9 μ V (75 ohms DIN)
Stereo:	17.2 dBf, 2.0 μ V (75 ohms IHF) 23 μ V (75 ohms DIN)
50 dB Quieting Sensitivity	
Mono:	17.2 dBf, 2.0 μ V (75 ohms)
Stereo:	37.2 dBf, 20 μ V (75 ohms)
Capture Ratio:	2.0 dB

Image Rejection Ratio:	40 dB
IF Rejection Ratio:	90 dB
Signal-to-Noise Ratio	
Mono:	76 dB, IHF
Stereo:	70 dB, IHF
Alternate Channel Att. (± 400 kHz)	
Mono:	55 dB, IHF
Selectivity:	55 dB DIN (± 300 kHz 40 kHz Devi.)
AM Suppression Ratio:	50 dB
Total Harmonic Distortion	
Mono:	0.15%
Stereo:	0.25%
Frequency Response:	30 Hz to 15 kHz, ± 1.5 dB
Stereo Separation:	45 dB at 1 kHz 30 dB at 100 Hz to 10 kHz
Stereo Threshold:	17.2 dBf, 2.0 μ V (75 ohms)

AM

Tuning Range:	530 to 1,710 kHz (10 kHz steps)
Usable Sensitivity:	30 μ V
Image Rejection Ratio:	40 dB
IF Rejection Ratio:	40 dB
Signal-to-Noise Ratio:	40 dB
Total Harmonic Distortion:	0.7%

GENERAL

Power Supply:	AC 120 V, 60 Hz
Power Consumption:	2.8 A
Dimensions (W · H · D):	17-1/8" · 5-7/8" · 13-7/16" 435 · 150 · 341 mm
Weight:	19.8 lbs. (9.0 kg)


REMOTE CONTROLLER (RC-477S)


Transmitter:	Infrared
Signal range:	Approx. 16 ft., 5 meters
Power supply:	Two "AA" batteries (1.5 V · 2)

Specifications and features are subject to change without notice.

SERVICE PROCEDURES

1. Replacing the fuses

 This symbol located near the fuses indicates that the fuse used is fast operating type. For continued protection against fire hazard, replace with same type fuse. For fuse rating refer to the marking adjacent to the symbol.

 Ce symbole indique que le fusible utilise est a rapide. Pour une protection permanente, n'utiliser que fusibles de meme type. Ce dernier est la qu le present symbol est appse.

CIRCUIT NO.	PART NO.	DESCRIPTION
F901	252258 or 252164	5A-T/UL-ST2 or 5A-UL/T-237

2. To initialize the unit

This device employs a microprocessor to perform various functions and operations. If interference generated by an external power supply, radio wave, or other electrical source results in accident which causes the specified operations and functions to operate abnormally.

To perform a result, please follow the procedure below.

1. Press and hold down the DVD button, then press the Speakers A button.
 2. After "CLEAR" is displayed, the preset memory and each mode stored in the memory, such as surround, are initialized and will return to the factory setting.
- Unplug the power supply cord from outlet.

3. Safety-check out

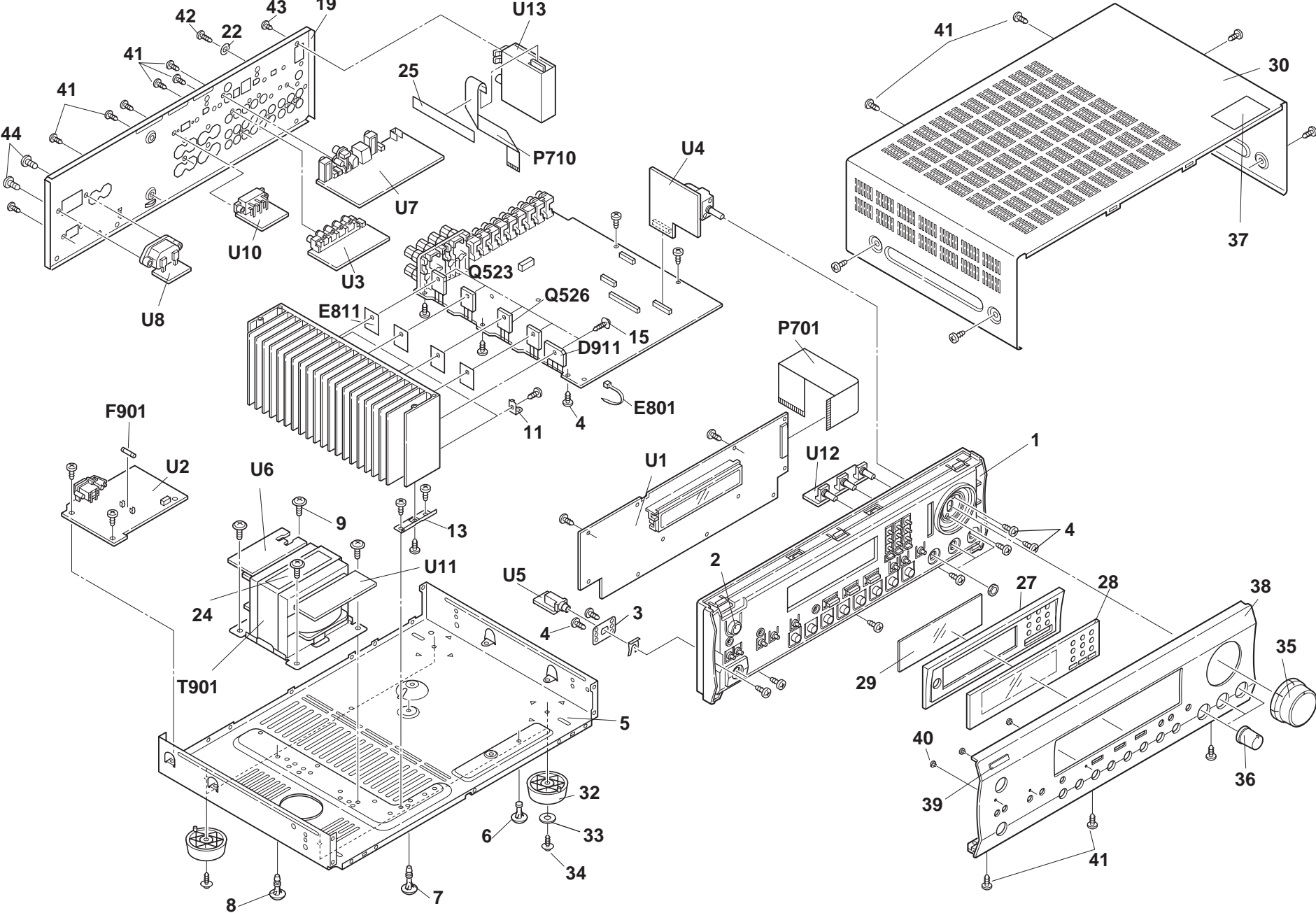
After correcting the original service problem, perform the following safety check before releasing the set to the customer. Connect the insulating-resistance tester between the plug of power supply cord and screw on the back panel.
Specifications: 3.3Mohm+/-10% at 500V.

4. Memory Preservation

This unit does not require memory preservation batteries. A built-in memory power back-up system preserves the contents of the memory during power failures and even when the unit is unplugged. The unit must be plugged in order to charge the back-up system.

The memory preservation period after the unit has been unplugged varies depending on climate and placement of the unit. On the average, memory contents are protected over a period of a few weeks after the last time the unit has been unplugged. This period is shorter when the unit is exposed to a highly humid climate.

EXPLODED VIEW



	A	B	C	D
EXPLODED VIEW				
PARTS LIST				
	REF.NO.	PART NO.	DESCRIPTION	
1	1	27111267	Front bracket	
	2	28325756	Knob, standby	
	3	27141787	Retainer HP	
	4	838130088	3TTB+8B,Self-tapping screw	
	5	27100321B	Chassis	
	6	27190991	Holder	
	7	27190511	KGLS-16RF,Holder	
	8	27190266	KGLS-12RF,Holder	
	9	830440089	4TTC+8C(BC),Self-tapping screw	
	10	27160379	Heat sink	
	11	27141530A	Retainer HS-2	
2	13	27141671	Retainer	
	15	801433	3SMS8W.SW+14B(BC),Special screw	
	19	27122952	Rear panel	
	22	87643010	W3*10F(BC),Flat washer	
	24	29362609	Label PT	
	25	29110083	Tape, cloth	
	27	27191166	Holder, plate	
	28	28191956	Clear plate	
	29	28133401	Back plate	
	30	28184663-1	Top cover	
	32	27175319B	Leg	
	33	28141332	Cushion	
	34	831430088	3TTW+8B(BC),Self-tapping screw	
	35	28325984	Knob, volume	
	36	28325405	Knob, tone	
	37	29362772	Label, cover	
	3	38	27212367	Front panel
39		28135278	Badge	
40		28198905	Facet	
41		838430088	3TTB+8B(BC),Self-tapping screw	
42		838930088	3TTB+8B(UN),Self-tapping screw	
43		838430068	3TTB+6B(BC),Self-tapping screw	
44		838440089	4TTB+8C(BC),Self-tapping screw	
D911		22380130,	D5SBA20,	
		22380274 or	RS603M or	
		22380038	RBV602,Diode	
4	E801	260208	Wire tie	
	E811	223025	AC262,Isolated plate	
	F901	252258 or	! 5A-T/UL-ST2 or	
		252164	! 5A-UL/T-237,Fuse	
	P701	2047332012	NCF7-332012,FF cable	
	P710	2047152012	NCF7-152012,FF cable	
	Q523,Q524	2202823	* 2SC5200-O or	
		2202822	* 2SC5200-R,Transistor	
	Q525,Q526	2202813 or	* 2SA1943-O or	
		2202812	* 2SA1943-R	
5	T901	2301216	! NPT-1281D,Power transformer	
	U1	1A137586-1A	NADIS-7386-1A,Display circuit PC board ass'y	
	U2	1A137587-1A	NAPS-7387-1A,Primary circuit PC board ass'y	
	U3	1A137588-1A	NAVD-7388-1A,Video terminal PC board ass'y	
	U4	1A137589-1A	NAETC-7389-1A,Volume PC board ass'y	
	U5	1A137590-1A	NAETC-7390-1A,Headphone terminal PC board ass'y	
	U6	1A137591-1A	NAETC-7391-1A,Terminal PC board ass'y	
	U7	1A137592-1A	NAETC-7392-1A,Control terminal PC board ass'y	
	U8	1A137593-1A	NAETC-7393-1A,AC inlet PC board ass'y	
	U9	1A137595-1A	NAAF-7395-1A,Main circuit PC board ass'y	
	U10	1A137596-1A	NASW-7396-1A,Impedance switch PC board ass'y	

A B C D

BLOCK DIAGRAM 1

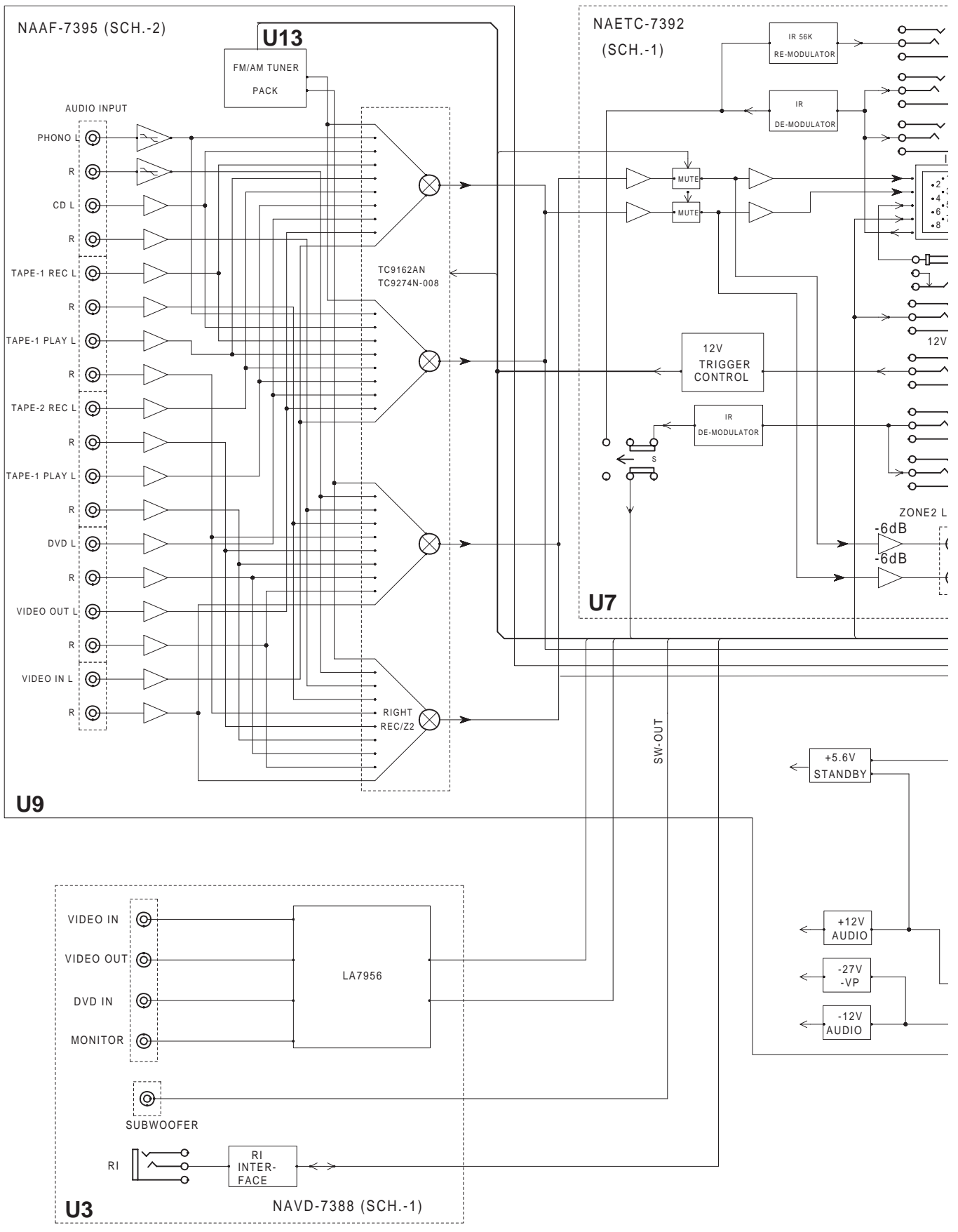
1

2

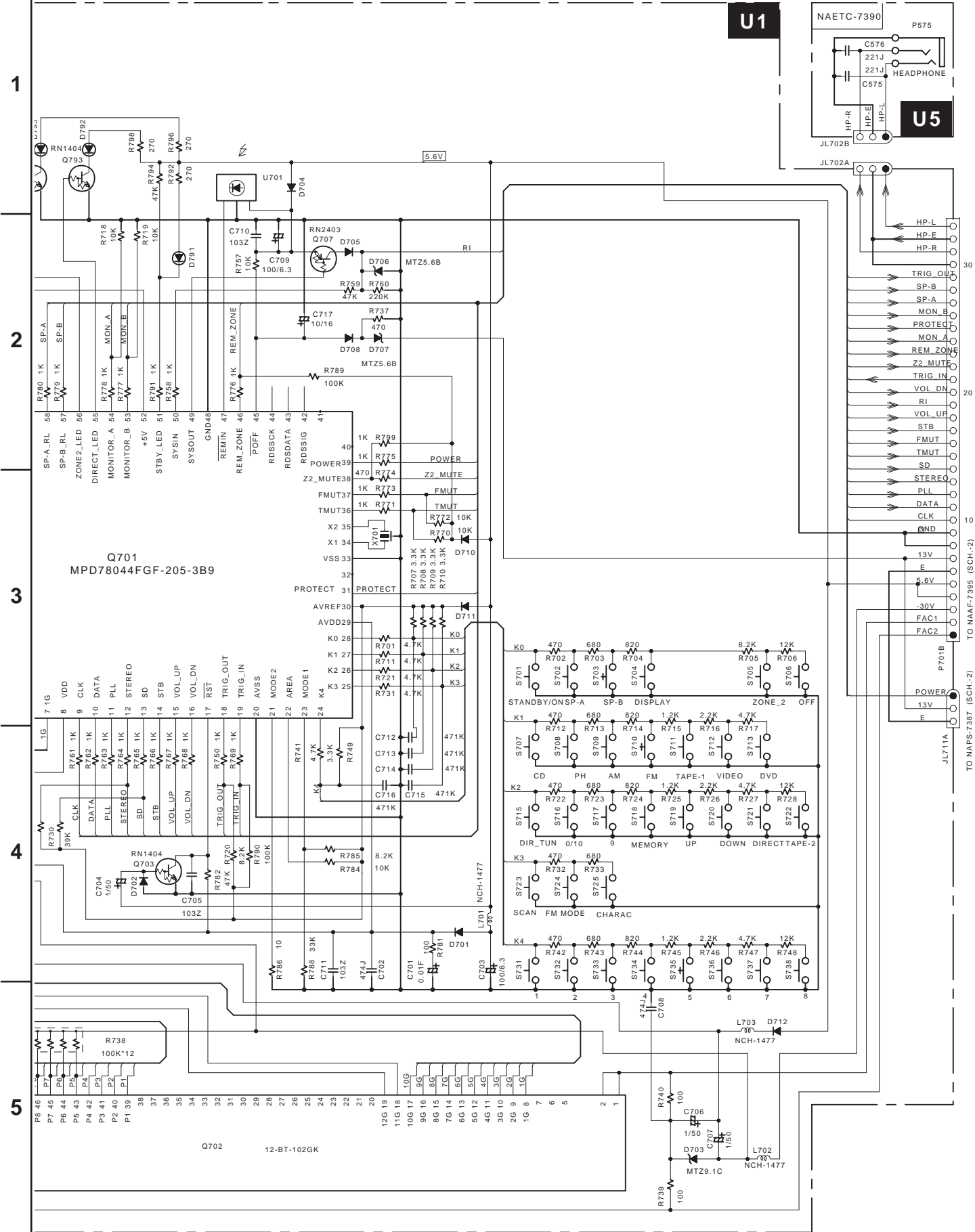
3

4

5



A B C D
SCHEMATIC DIAGRAM 2-2



A B C D

WIRING VIEW 1

1

U8

NAETC-7393-1A,
AC inlet PC board ass'y

U6

NAETC-7391-1A, Terminal PC board ass'y

2

U2

NAPS-7387-1A, Primary circuit
PC board ass'y

U11

NAETC-7397-1A, Second terminal PC board ass'y

3

4

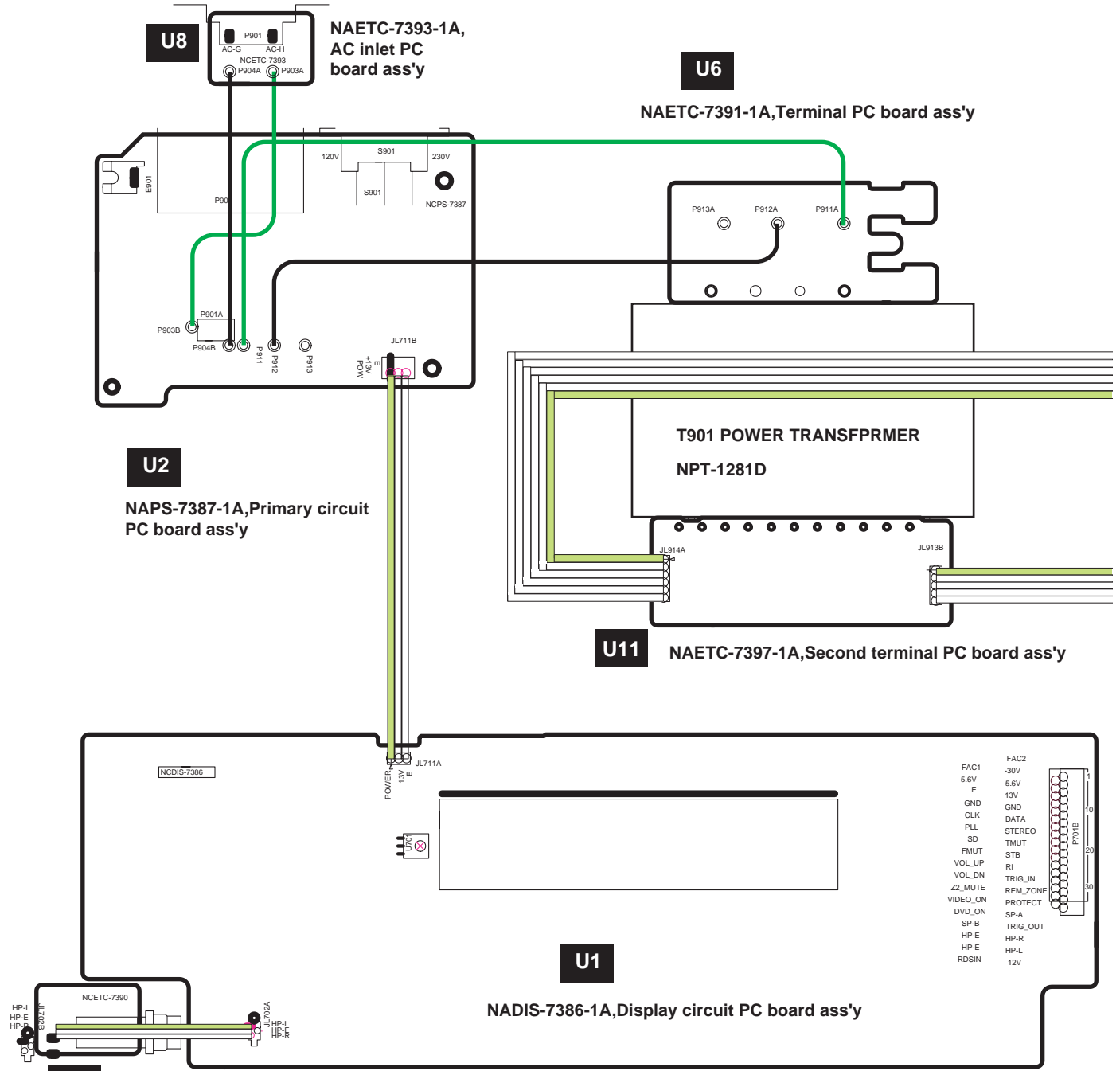
U1

NADIS-7386-1A, Display circuit PC board ass'y

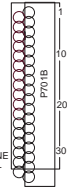
5

U5

NAETC-7390-1A,
Headphone terminal
PC board ass'y



FAC1	-30V
5.6V	5.6V
E	13V
GND	GND
CLK	DATA
PLL	STEREO
SD	TMUT
FMUT	STB
VOL_UP	RI
VOL_DN	TRIG_IN
Z2_MUTE	REM_ZONE
VIDEO_ON	PROTECT
DVD_ON	SPA
SP-B	TRIG_OUT
HP-E	HP-R
HP-E	HP-L
RDSIN	12V

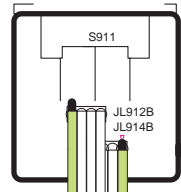


A B C D

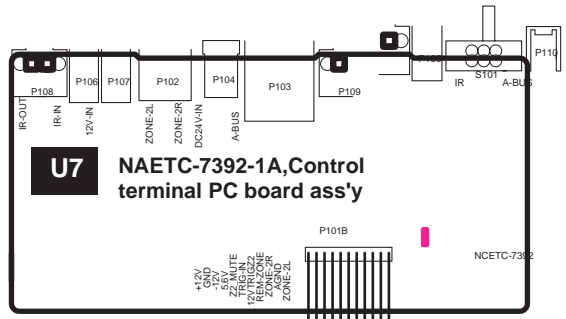
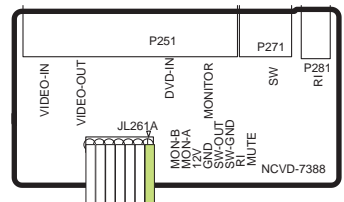
WIRING VIEW 2

1
2
3
4
5

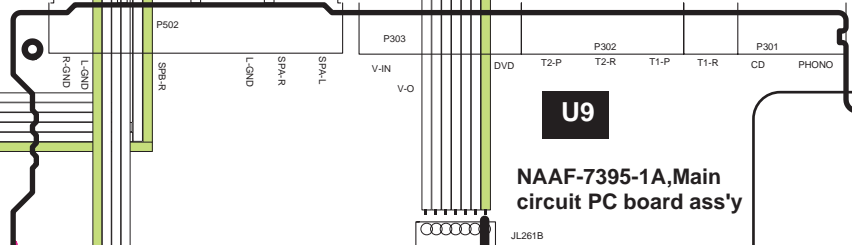
U10 NASW-7396-1A, Impedance switch PC board ass'y



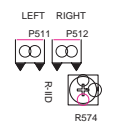
U3 NAVD-7388-1A, Video terminal PC board ass'y



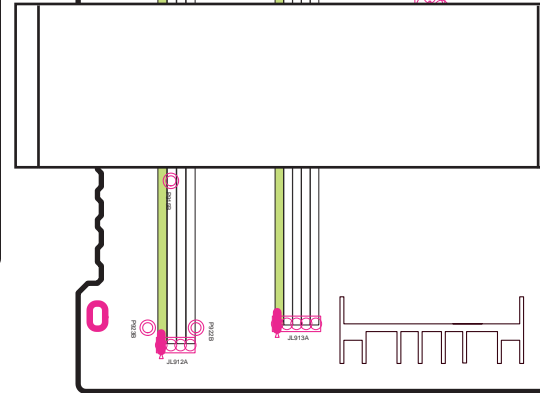
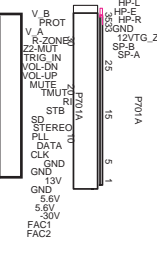
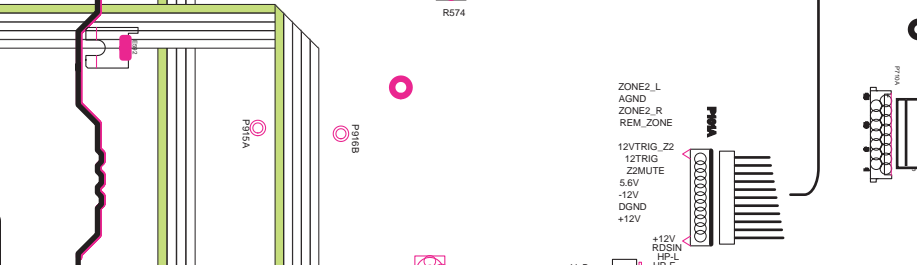
U7 NAETC-7392-1A, Control terminal PC board ass'y



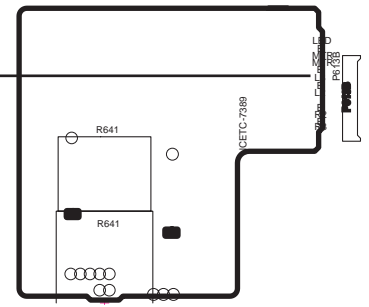
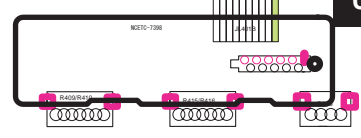
U9 NAAF-7395-1A, Main circuit PC board ass'y




U13 TFCE1U114B, Tuner unit




U12 NAETC-7398-1A, Tone PC board ass'y



U4 NAETC-7389-1A, Volume PC board ass'y

	A	B	C	D
	PRINTED CIRCUIT BOARD-PARTS LIST			
	CIRCUIT NO. PART NO.	DESCRIPTION	CIRCUIT NO.	PART NO. DESCRIPTION
	Capacitors		Terminals	
1	C162 393341017	100uF,16V,Elect.	P301~P303	25045508 or NPJ-6PDBL323 or
	C163 394644707	47uF,16V,Elect.		25045565 NPJ-6PDBL380
	C225 374721015	100pF+/-10%,50V,Plastic	P502	25060307 NTM-8PDMN238
	C226 394641007	10uF,16V,Elect.		Relays
	C303,C304 393341007	10uF,16V,Elect.	RL501,RL502	25065563, NRL-2P5A-DC24-129,
	C307,C308 394621017	100uF,6.3V,Elect.		25065563 or NRL-2P5A-DC24-129 or
	C309,C310 374726224	6200pF+/-5%,50V,Plastic		25065618 NRL-2P5A-DC24-158
	C311,C312 374721824	1800pF+/-5%,50V,Plastic	JL261B	25050271 NSCT-7P99
	C313,C314 393341007	10uF,16V,Elect.	JL401A	25051095 NSCT-11P882
	C315,C316 394642217	220uF,16V,Elect.	JL912A	25051108 NSCT-4P895
	C391,C392 374721015	100pF+/-10%,50V,Plastic	JL913A	25051109 NSCT-5P896
	C398 394621017	100uF,6.3V,Elect.	P701A	25051840 NSCT-33P1627
	C401~C404 393344707	47uF,16V,Elect.	P710A	25051822, NSCT-15P1609,
	C405,C406 374721015	100pF+/-10%,50V,Plastic		25052024 or NSCT-15P1811 or
	C407,C408 393344707	47uF,16V,Elect.		25052211 NSCT-15P2108
2	C411,C412 393344707	47uF,16V,Elect.		Plugs
	C415,C416 394642217	220uF,16V,Elect.	P101A	25055155 NPLG-11P139
	C433,C434 374721034	0.01uF+/-5%,50V,Plastic	P511,P512	25055038 NPLG-2P29
	C442 394680477	4.7uF,50V,Elect.	P613A	25055706 NPLG-10P662
	C451,C452 393344707	47uF,16V,Elect.	Q164A,Q922A	27160145-1 RAD-51,Heatsink
	C453,C454 374721015	100pF+/-10%,50V,Plastic	Q921A	27160209 RAD-67,Heatsink
	C455,C456 393344707	47uF,16V,Elect.	P910	27190540-1 Holder,clamp
	C491 394641007	10uF,16V,Elect.	Q164B,Q921B	838430107 3TTB+10S(BC),Self-tapping screw
	C501,C502 393382207	22uF,50V,Elect.	Q922B	838430107 3TTB+10S(BC),Self-tapping screw
	C503,C504 374721015	100pF+/-10%,50V,Plastic		
	C505,C506 393342217	220uF,16V,Elect.		Impedance switch PC board (NASW-7396-1A)
	C509,C510 394681007	10uF,50V,Elect.		CIRCUIT NO. PART NO. DESCRIPTION
	C513,C514 394644707	47uF,16V,Elect.	S911	25065437 NSS-22157P
	C515,C516 374721015	100pF+/-10%,50V,Plastic	JL912B	25051108 NSCT-4P895
3	C517,C518 374724734	0.047uF+/-5%,50V,Plastic	JL914B	25051110 NSCT-6P897
	C519,C520 374721044	0.1uF+/-5%,50V,Plastic		
	C521,C522 394681007	10uF,50V,Elect.		Second terminal PC board (NAETC-7397-1A)
	C525,C526 394694717	470uF,100V,Elect.		CIRCUIT NO. PART NO. DESCRIPTION
	C529,C530 374721015	100pF+/-10%,50V,Plastic		Resistors
	C581 394621017	100uF,6.3V,Elect.	R921,R922	453530104  1ohm+/-5%,1/2W,Metal
	C582 374724734	0.047uF+/-5%,50V,Plastic		Sockets
	C583 394680107	1uF,50V,Elect.	JL914A	25051110 NSCT-6P897
	C909,C910 374723344	0.33uF+/-5%,50V,Plastic	JL913B	25051109 NSCT-5P896
	C912,C913 374723344	0.33uF+/-5%,50V,Plastic		
	C915,C916 3504237	10000uF,71V,Elect.		Tone PC board (NAETC-7398-1A)
	C918 394661027	1000uF,35V,Elect.		CIRCUIT NO. PART NO. DESCRIPTION
	C919 394663317	330uF,35V,Elect.		Capacitors
4	C922,C923 394681007	10uF,50V,Elect.	C421,C422	374722234 0.022uF+/-5%,50V,Plastic
	C926 394661017	100uF,35V,Elect.		Resistors
	C928 394681017	100uF,50V,Elect.	R393	5104288 N11RLC250KWT20Z,Variable
	C932 394681007	10uF,50V,Elect.	R409,R415	5104356 N14RLC100KWT20Z,Variable
				Socket
	R162 4000195	RXE030,Themistor	JL401B	25051095 NSCT-11P882
	R521~R524 443528204	82ohm+/-5%,1/2W,Metal oxide		
	R525,R526 443526804	68ohm+/-5%,1/2W,Metal oxide		
	R527,R528 443528204	82ohm+/-5%,1/2W,Metal oxide		
	R529,R530 443525604	56ohm+/-5%,1/2W,Metal oxide		
	R539-R542 453530224	2.2ohm+/-5%,1/2W,Metal		
	R543,R544 443522214	220ohm+/-5%,1/2W,Metal oxide		
	R547,R548 4000201 or 4000132	RF-5EGKR22 or RGC55 0.22,Metal plate		
5	R555,R556 453630824	8.2ohm+/-5%,1W,Metal		
	R557,R558 443623914	390ohm+/-5%,1W,Metal oxide		
	R573,R574 5210259	N06HR2KBC,Trimming		
	R591,R592 4500171F	2.2ohm+/-5%,1/4W,Metal		
	R934,R935 453530104	1ohm+/-5%,1/2W,Metal		
	R925 453530104	1ohm+/-5%,1/2W,Metal		

NOTE:THE COMPONENTS IDENTIFIED BY MARK  ARE CRITICAL FOR RISK OF FIRE AND ELECTRIC SHOCK. REPLACE ONLY WITH PART NUMBER SPECIFIED.

A

B

C

D

PRINTED CIRCUIT BOARD-PARTS LIST

CAUTION: Replacement for transistor of mark *, if necessary must be made from the same beta group (hFE) as the original type.

Control terminal PC board (NAETC-7392-1A)

CIRCUIT NO. PART NO. DESCRIPTION

ICs

Q121,Q122 22241383R2 or NJM4565M-D or
22240489R1NE MPC4570G2-T1(MST)
Q149 222780053 78L05

Transistors

Q102,Q103 2215410R2 RN1441
Q123,Q124 2215410R2 RN1441
Q125 2216220R2 or KRA102S or
2214530R2 RN2402
Q141 2216185R2 or KTA1504-GR or
2214375R2 2SA1162-GR
Q142-Q144 2216175R2 or KTC3875-GR or
2213145R2 2SC2712-GR

Q145,Q146 2216190R2 or KRC102S or
2214470R2 RN1402
Q148 2216175R2 or KTC3875-GR or
2213145R2 2SC2712-GR
Q182,Q183 2216190R2 or KRC102S or
2214470R2 RN1402

Diodes

D121,D131 223234R2 or 1SS352 or
D181 223269R2 1SS355
D141 22380260, RL1N4003,
22380032 or 1SR139-100 or
22380035 GP104003E

Photo couplers

Q161,Q181 24120043, ON3131,
24120044 or ON3131-R or
24120045 ON3131-S

Capacitors

C103,C104 393384707 47uF,50V,Elect.
C121,C122 393380227 2.2uF,50V,Elect.
C123,C124 393341007 10uF,16V,Elect.
C125,C126 393380227 2.2uF,50V,Elect.
C131,C132 393381007 10uF,50V,Elect.
C133,C134 394644707 47uF,16V,Elect.
C135,C145 394641007 10uF,16V,Elect.
C143,C182 374722234 0.022uF+/-5%,50V,Plastic
C144 394661017 100uF,35V,Elect.
C183 394621017 100uF,6.3V,Elect.

Resistors

R152 443524714 470ohm+/-5%,1/2W,Metal oxide

Terminals

P102 25045692 NPJ-2PDWR489
P104 25045598 HEC0470-01-630
P105-P107 25045504 NPJ-1PDBL319
P108,P109 25045647 HSJ1002-01-1020

Switches

S101 25065286 NSS-22112
P101 2002A392225 NSAS-22P0874
P103 25052662 NSCT-8P2558

AC inlet PC board (NAETC-7393-1A)

CIRCUIT NO. PART NO. DESCRIPTION

P901 25055960  NPLG-2P913

Main circuit PC board (NAAF-7395-1A)

CIRCUIT NO. PART NO. DESCRIPTION

ICs

Q301 222502 NJM4558D-X
Q302 22240798 TC9162AN
Q303 22240829 TC9274N-008
Q401-Q403 22240250 NJM2068L-D
Q481 22240239 TA7291S
Q921 222780125 78M12HF
Q922 222790125 79M12HF
Q923 222780565JRC 78M56(NJM78M56FA)

Transistors

Q163 2215830 or KRC105M or
2213640 DTC123JS
Q164 2203584 KTD2058-Y
Q491,Q492 2213631 or RN1241-A or
2213632 RN1241-B
Q493 2215770 or KRA102M or
2213510 DTA114ES

Q501-Q506 2215896, * KTC3200-BL,
Q527,Q528 2215895, * KTC3200-GR,
Q581,Q582 2210755, * 2SC1775A-E,
2210756, * 2SC1775A-F,
2211732 or * 2SC1845-F or
2211733 * 2SC1845-E

Q507-Q510 2215843, KTA1024-O,
Q513,Q514 2211353 or 2SA949-O or
2215844 KTA1024-Y
Q515,Q516 2215853, KTC3206-O,
2211633 or 2SC2229-O or
2215854 KTC3206-Y

Q517,Q518 2215864, KTC3199-GR,
Q529,Q530 2213284 or 2SC1740S-R or
2213285 2SC1740S-S
Q519,Q520 2203434 or KTD2061-Y or
2203010 2SC5171

Q521,Q522 2203424 or KTB1369-Y or
2203000 2SA1930
Q583 2215885, KTA1268-GR,
2211792 or 2SA992-F or
2211793 2SA992-E

Q591,Q592 2215830 or KRC105M or
2213640 DTC123JS
Q924 2211455 or 2SA1015-GR or
2215975 KTA1266-GR


Diodes

D201 223234R2 or 1SS352 or
223269R2 1SS355
D915-D921 22380260, RL1N4003,
22380032 or 1SR139-100 or
22380035 GP104003E
D161 224451203 MTZ12C
D491 223163 or 1SS133 or
223205 1SS270A

D511,D512 223163 or 1SS133 or
D591,D592 223205 1SS270A
D571 224470512 MTZJ5.1B
D922 224472704 MTZJ27D
D923 223163 or 1SS133 or
223205 1SS270A

Coils

L501,L502 231176S S-1.3C

NOTE: THE COMPONENTS IDENTIFIED BY MARK  ARE CRITICAL FOR RISK OF FIRE AND ELECTRIC SHOCK. REPLACE ONLY WITH PART NUMBER SPECIFIED.

A

B

C

D

PRINTED CIRCUIT BOARD-PARTS LIST 1

DISPLAY CIRCUIT PC BOARD (NADIS-7386-1A)

CIRCUIT NO. PART NO. DESCRIPTION

1	FL tube	
	Q702	212157 12-BT-102GK
	ICs	
	Q701	22241775R3 MPD78044FGF-205-3B9
	Remote sensor	
	U701	241337 PIC-37043TE2
	Transistors	
	Q703	2214490R2 or RN1404 or 2216210R2 KRC104S
	Q705,Q706	2216175R2 or KTC3875-GR or 2213145R2 2SC2712-GR
	Q707	2214540R2 or RN2403 or 2216230R2 KRA103S
Q792,Q793	2214490R2 or RN1404 or 2216210R2 KRC104S	

CIRCUIT NO.

PART NO.

DESCRIPTION

Capacitors

C901	3500196S	△ RE275V-103M,IS
C952	394653317	330uF,25V,Elect.

Resistors

R901	431533355 or 4000206S	RC1/2GFKUL-3.3M or RD1/2SPH-3.3M Solid
------	--------------------------	---

Fuse holders

F901A,F901E	25052133	△ NSCT-1P2031
-------------	----------	---------------

Relay

RL901	25065561, 25065515 or 25065526	△ NRL-1P5A-DC12-127, △ NRL-1P5A-DC12-096 or △ NRL-1P5A-DC12-102
-------	--------------------------------------	---

Sockets

JL711B	25050267	NSCT-3P95
P902	25051571	△ NSCT-2P1358

2

Video terminal PC board (NAVD-7388-1A)

CIRCUIT NO. PART NO. DESCRIPTION

ICs		
Q251	22241759	LA7956
Transistors		
Q252	2216185R2 or 2214375R2	KTA1504-GR or 2SA1162-GR
Q253	2212285 or 2212286	2SC2878-A or 2SC2878-B
Q254	2214490R2 or 2216210R2	RN1404 or KRC104S

Diodes

D251,D252	223234R2 or 223269R2	1SS352 or 1SS355
-----------	-------------------------	---------------------

Capacitors

C251,C253	394680227	2.2uF,50V,Elect.
C252,C254	394644717	470uF,16V,Elect.
C255	394644707	47uF,16V,Elect.
P251	25045507 or 25045566	NPJ-4PDYE322 or NPJ-4PDYE381
P271	25045477	NPJ-1PDBL295
P281	25045504	NPJ-1PDBL319

Sockets

JL261A	25051111	NSCT-7P898
--------	----------	------------

3

Volume PC board (NAETC-7389-1A)


CIRCUIT NO. PART NO. DESCRIPTION

Resistors		
R641	5104334	N16RGL100KBT25F,Variable
P613B	25051235	NSCT-10P1025

Headphone terminal PC board (NAETC-7390-1A)

CIRCUIT NO. PART NO. DESCRIPTION

P575	25045257	YKB26-5138
JL702B	25051087	NSCT-3P874

NOTE:THE COMPONENTS IDENTIFIED BY MARK  ARE CRITICAL FOR RISK OF FIRE AND ELECTRIC SHOCK. REPLACE ONLY WITH PART NUMBER SPECIFIED.

CAUTION:Replacement for transistor of mark * , if necessary must be made from the same beta group (hFE) as the original type.

Primary circuit PC board (NAPS-7387-1A)

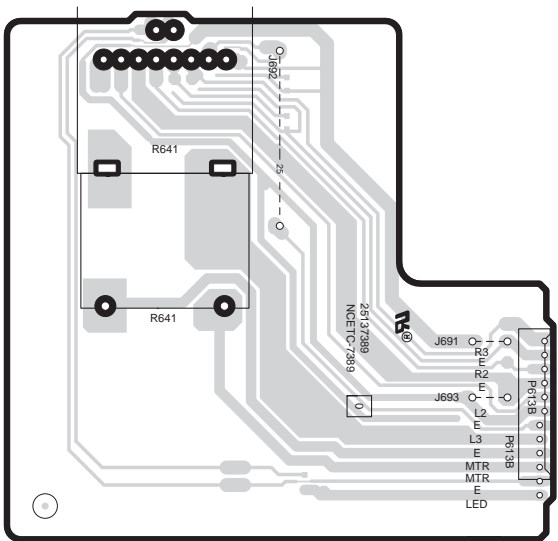
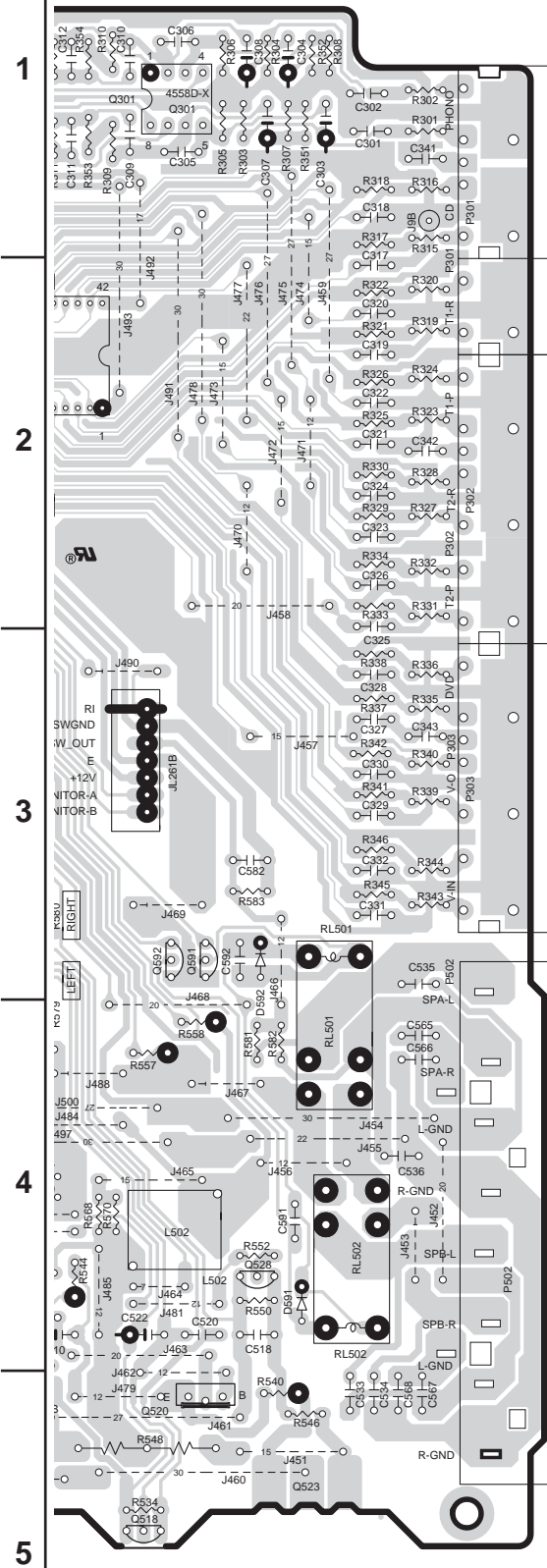
CIRCUIT NO. PART NO. DESCRIPTION

Transistors		
Q951	2215830 or 2213640	KRC105M or DTC123JS
Diodes		
D952	22380260, 22380032 or 22380035	RL1N4003, 1SR139-100 or GP104003E
D955	223163 or 223205	1SS133 or 1SS270A
Power transformer		
T902	2301381, 2300670A or 2301258	△ NPT-1358D, △ NPT-1111D or △ NPT-1294D

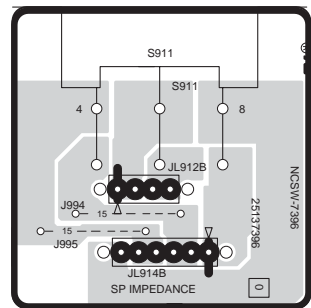
5

A B C D

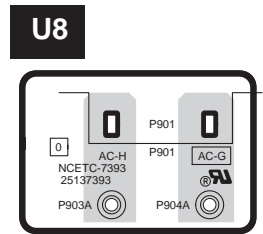
PRINTED CIRCUIT BOARD VIEW FROM SOLDERING SIDE 3-1



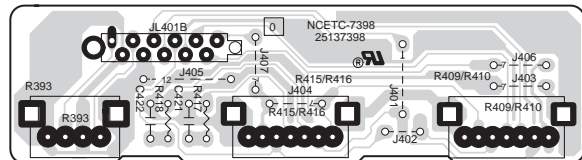
U4 NAETC-7389-1A, Volume PC board



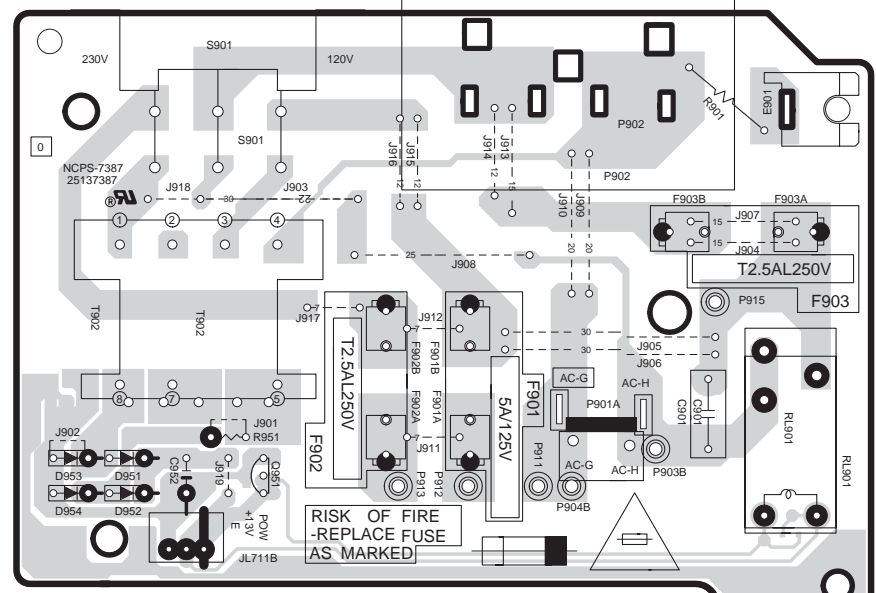
U10 NASW-7396-1A, Impedance switch PC board



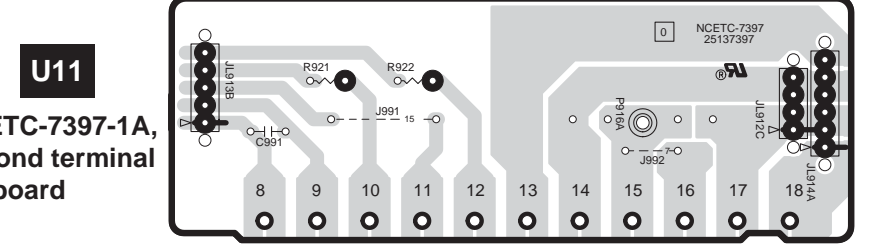
U8 NAETC-7393-1A, AC inlet PC board



U12 NAETC-7398-1A, Tone PC board



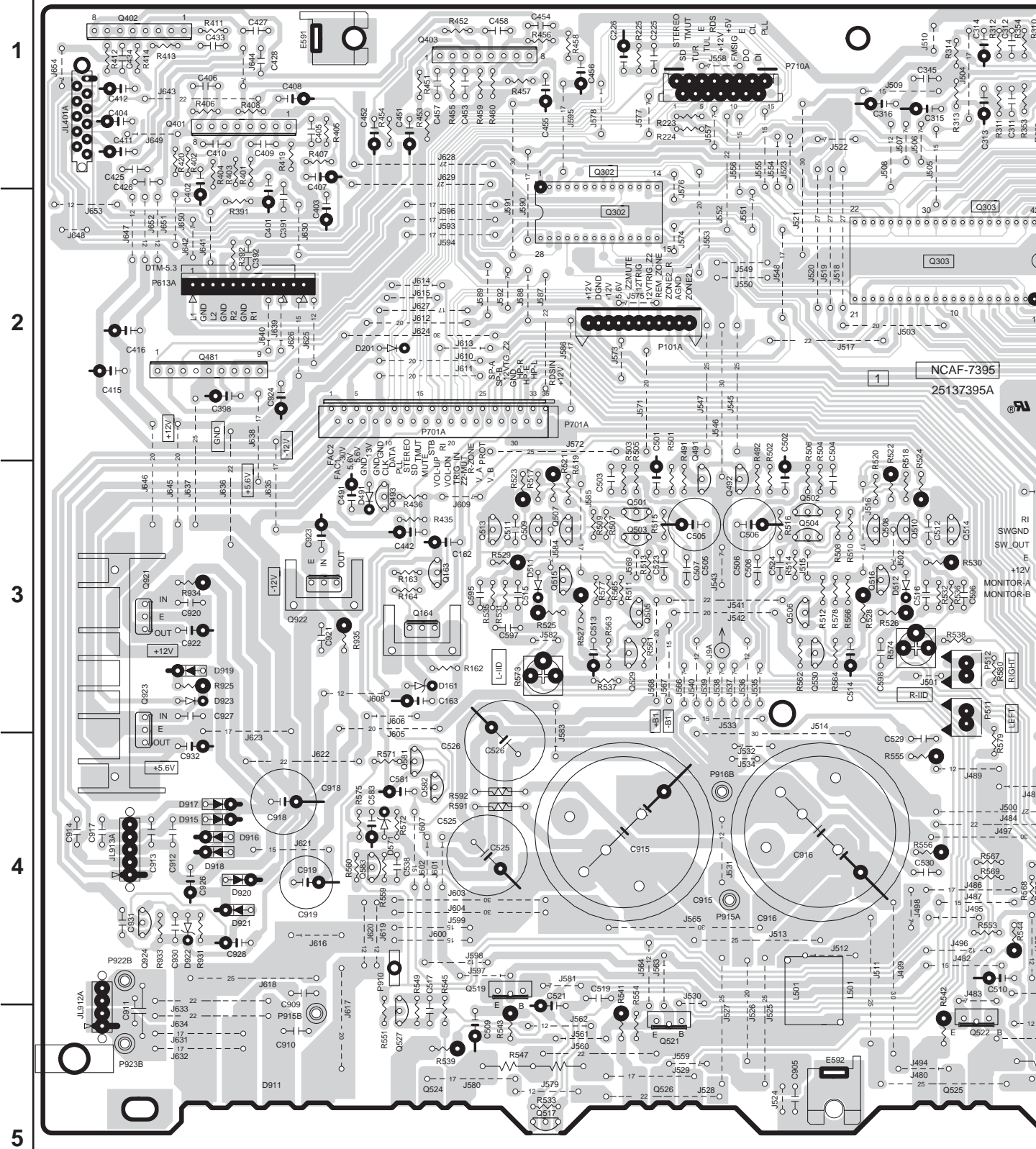
U2 NAPS-7387-1A, Primary circuit PC board



U11 NAETC-7397-1A, Second terminal PC board

U9 NAAF-7395-1A, Main circuit PC board

A B C D
PRINTED CIRCUIT BOARD VIEW FROM SOLDERING SIDE 3-1



U9 NAAF-7395-1A, Main circuit PC board

A

B

C

D

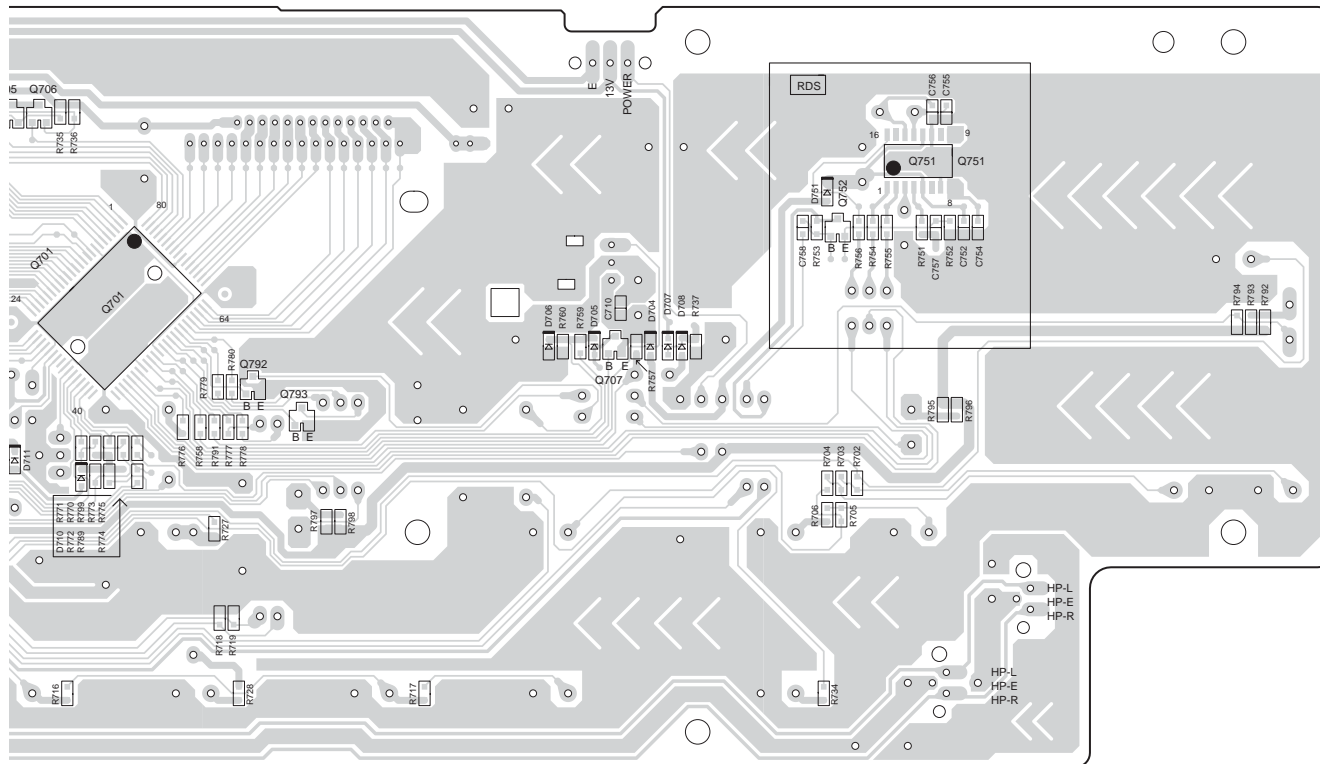
PRINTED CIRCUIT BOARD VIEW FROM SOLDERING SIDE 2-2

Soldering Side

1

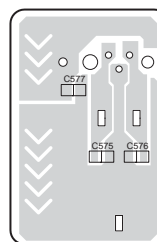
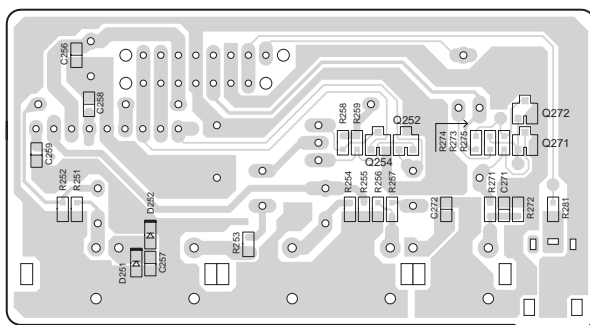
2

3



U1

4



U3

NAVD-7388-1A, Video terminal PC board

5

A

B

C

D

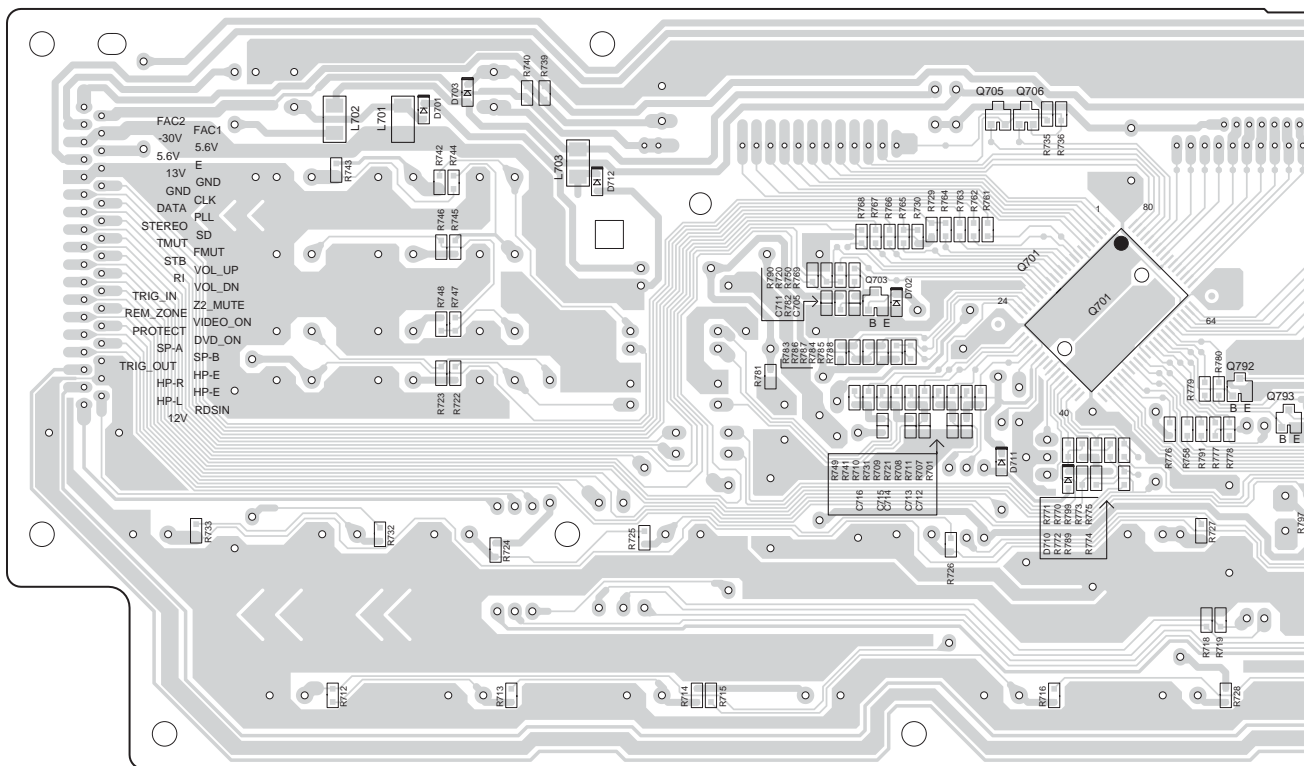
PRINTED CIRCUIT BOARD VIEW FROM SOLDERING SIDE 2-1

Soldering Side

1

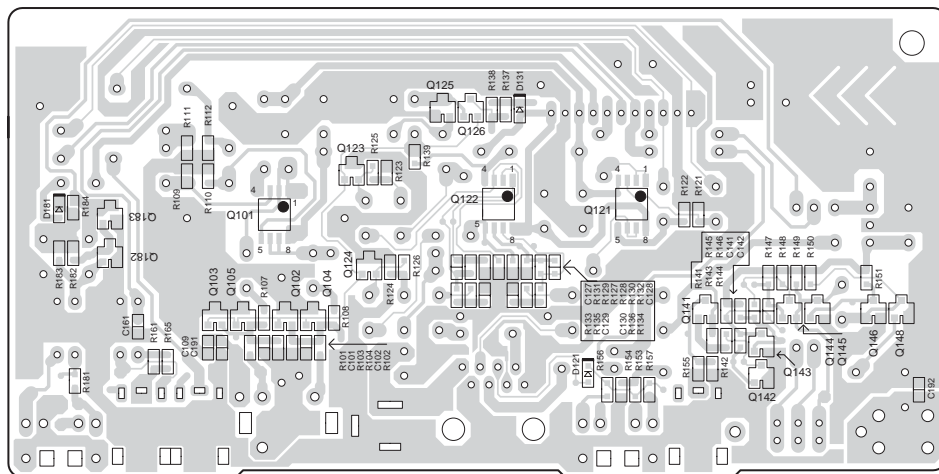
2

3



U1

4



U7 NAETC-7392-1A, Control terminal PC board

5

A B C D

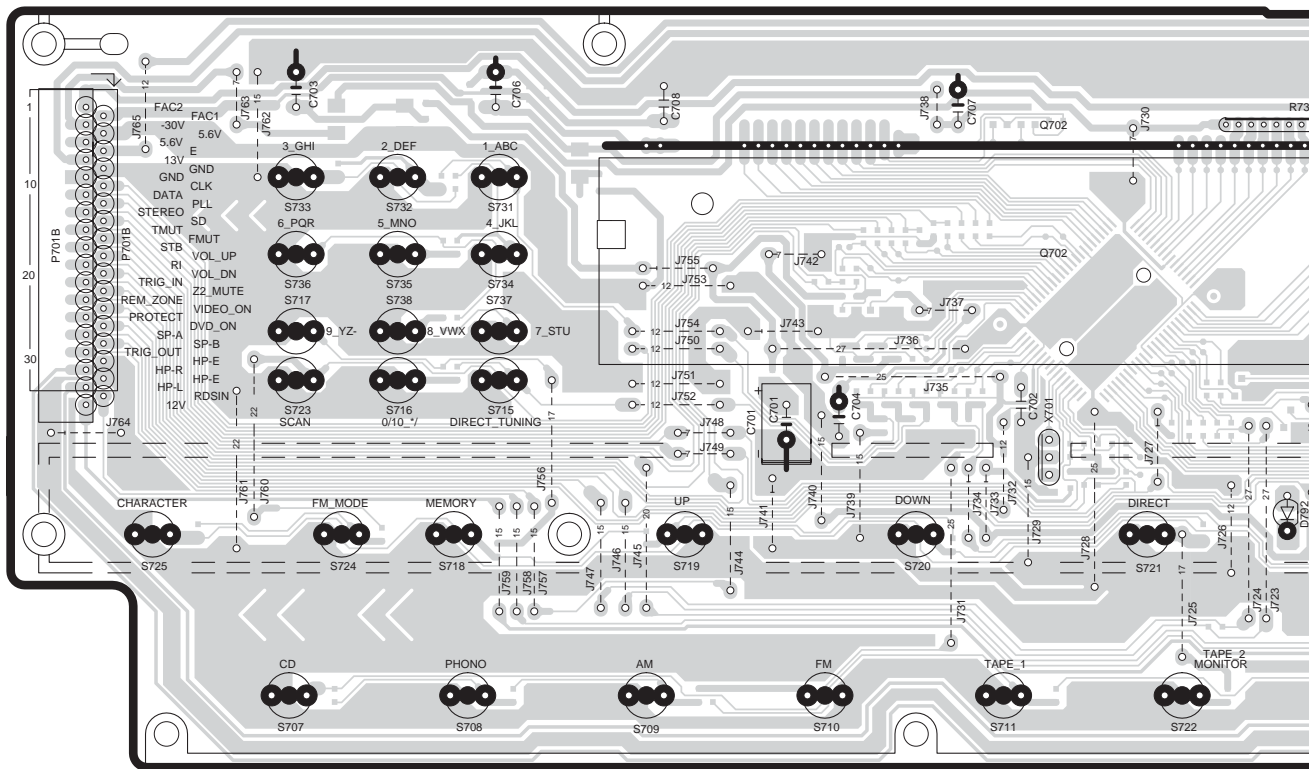
PRINTED CIRCUIT BOARD VIEW FROM SOLDERING SIDE 1-1

Component Side

1

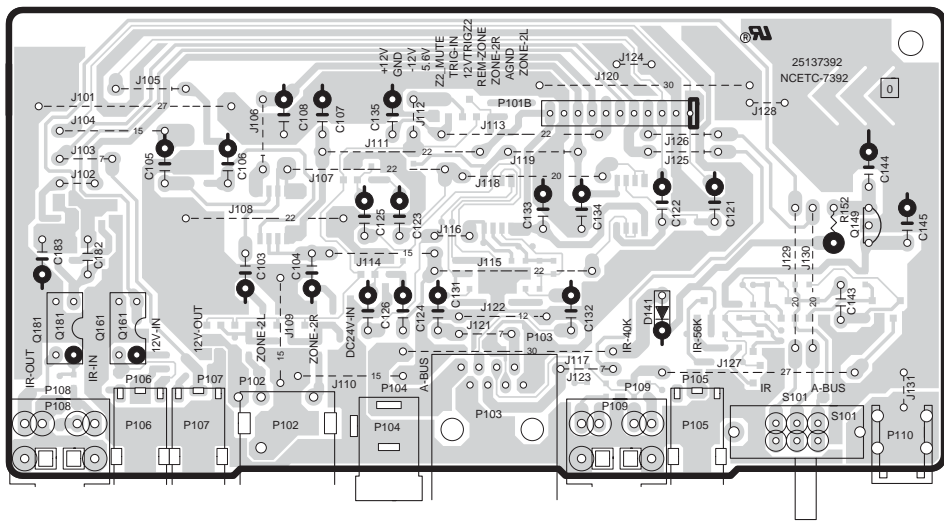
2

3



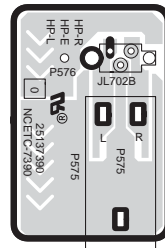
U1 NADIS-7386-1A, Display circuit PC board

4



U7 NAETC-7392-1A, Control terminal PC board

5



U5

NAETC-7390-1A, Headphone terminal PC board